



# Choosing wisely: Opportunities for research and action

David Howard

Department of Health Policy and Management

[david.howard@emory.edu](mailto:david.howard@emory.edu)





**Choosing  
Wisely<sup>®</sup>**

*An initiative of the ABIM Foundation*



**Choosing  
Wisely<sup>®</sup>**

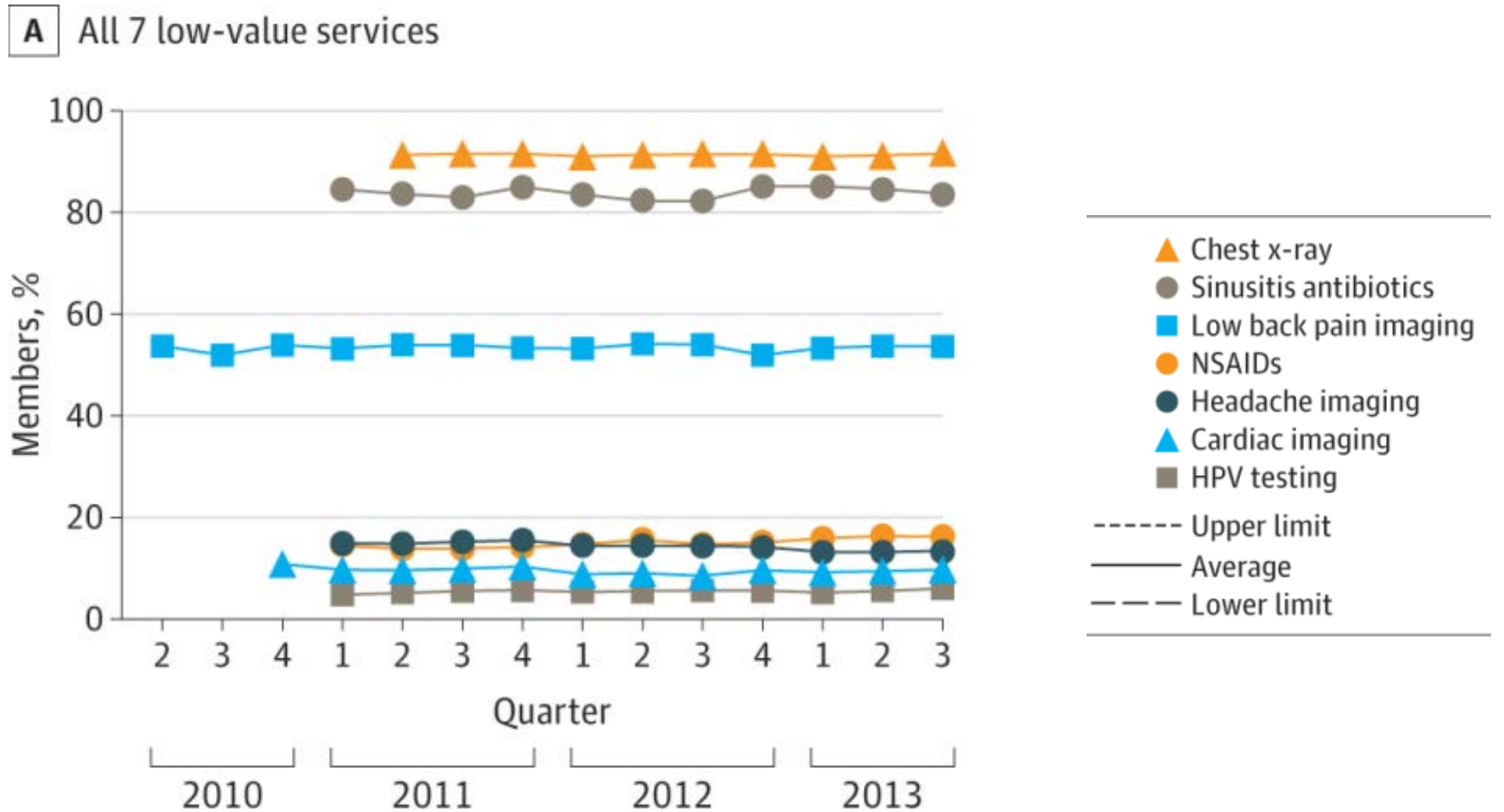
*An initiative of the ABIM Foundation*

Research

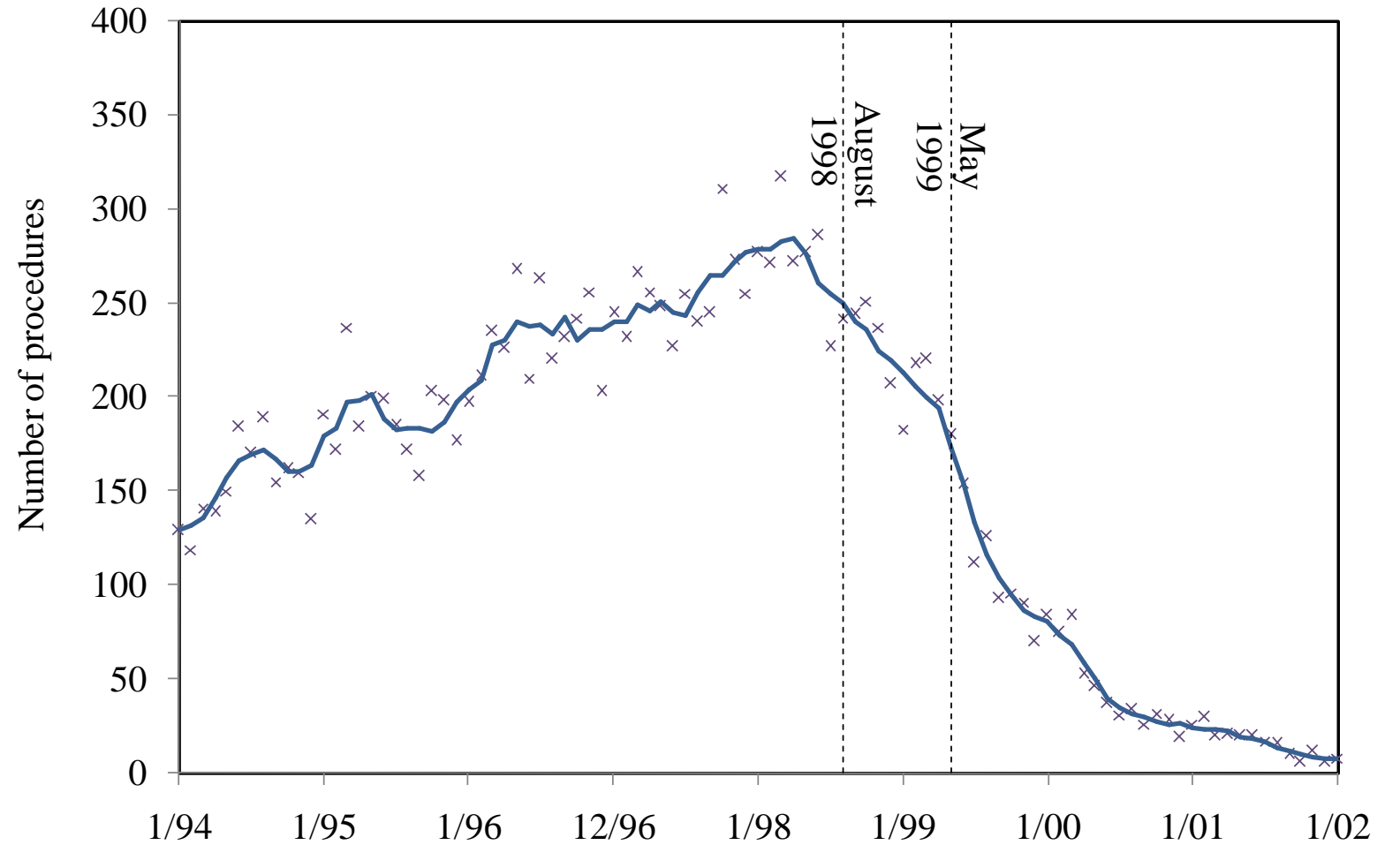
Funding

Cost  
savings

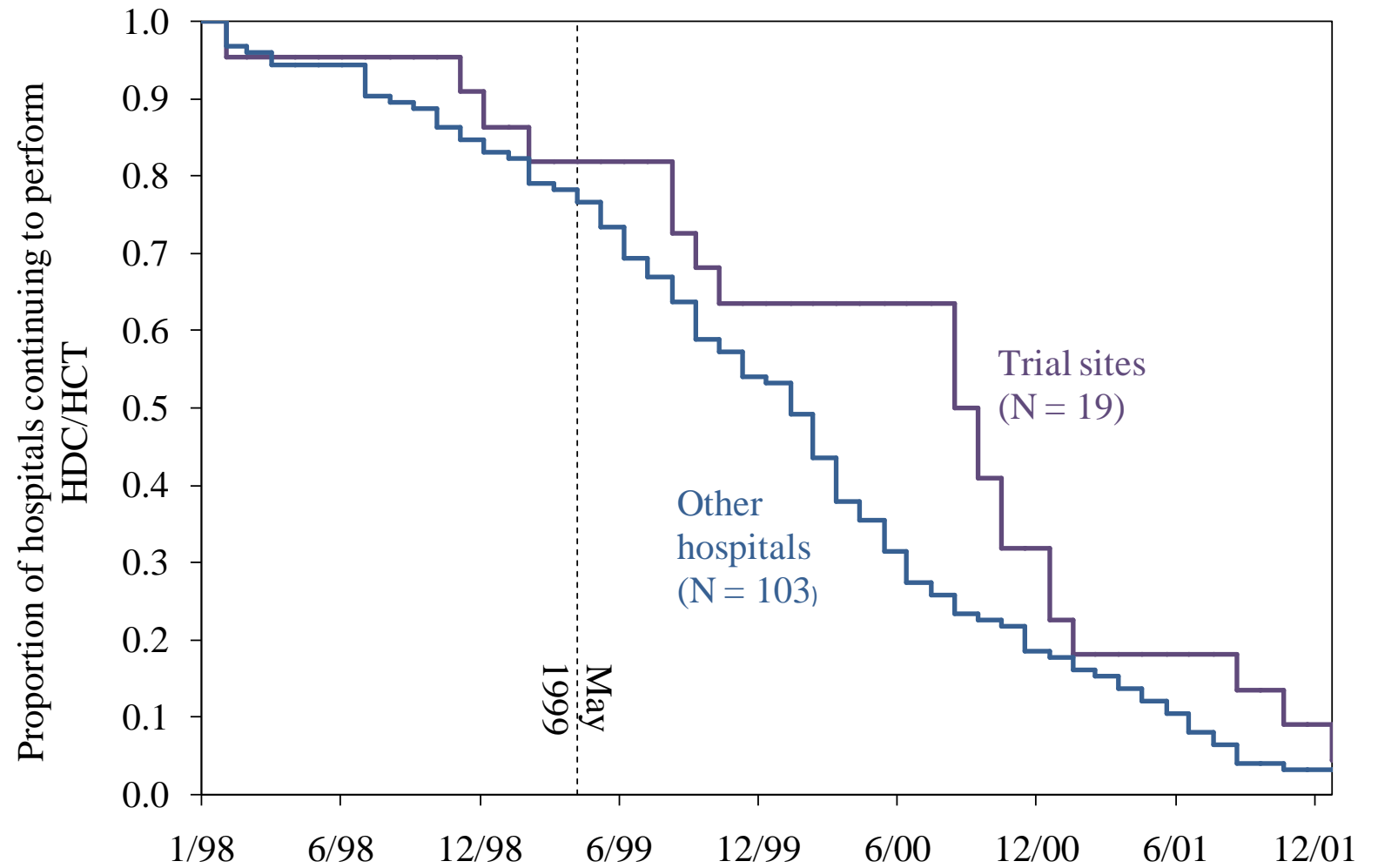
# Early Trends Among Seven Recommendations From the Choosing Wisely Campaign. *JAMA Internal Medicine* 2015.



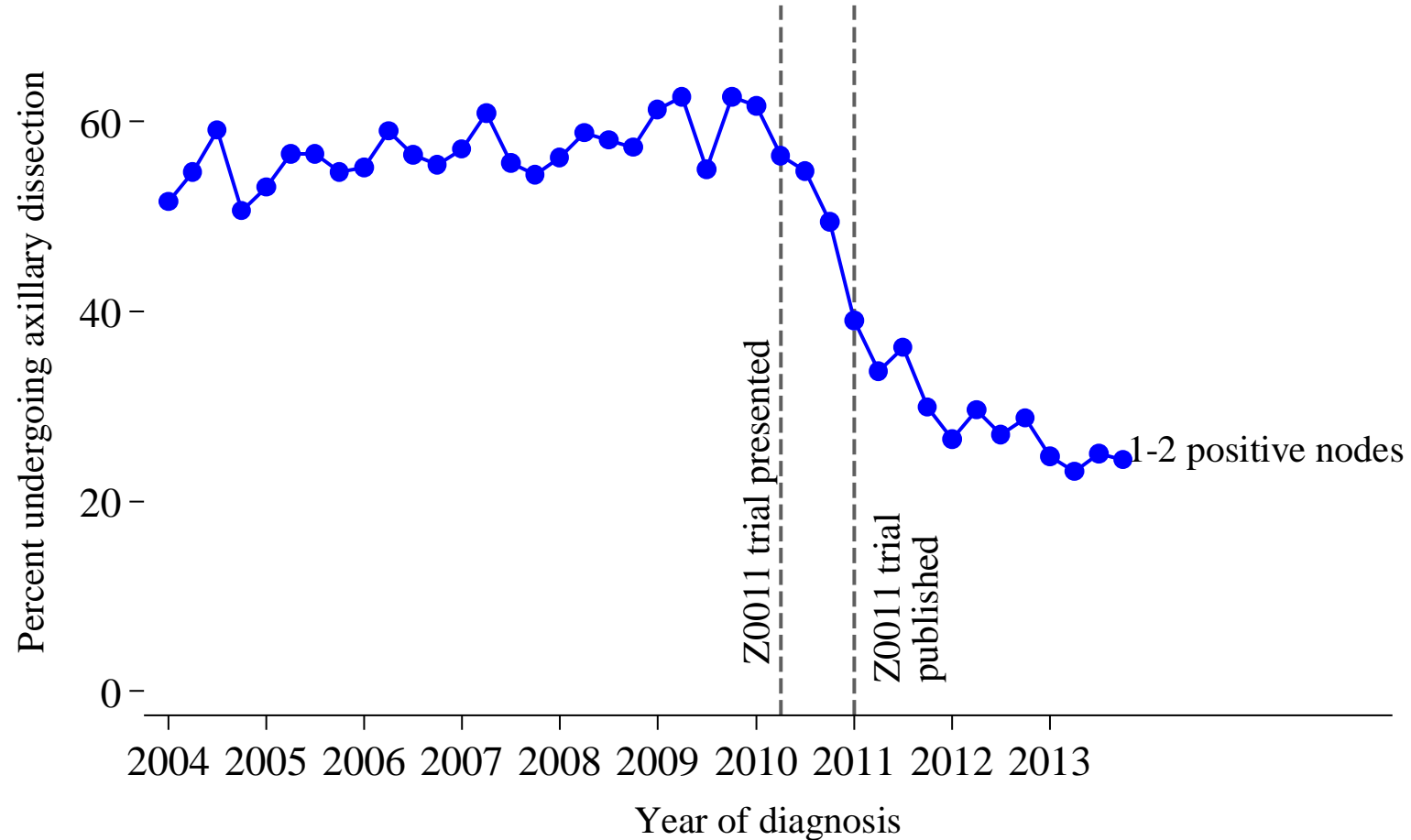
# Abandonment of high dose chemotherapy/stem cell transplantation in breast cancer patients



# Abandonment of high dose chemotherapy/stem cell transplantation in breast cancer patients



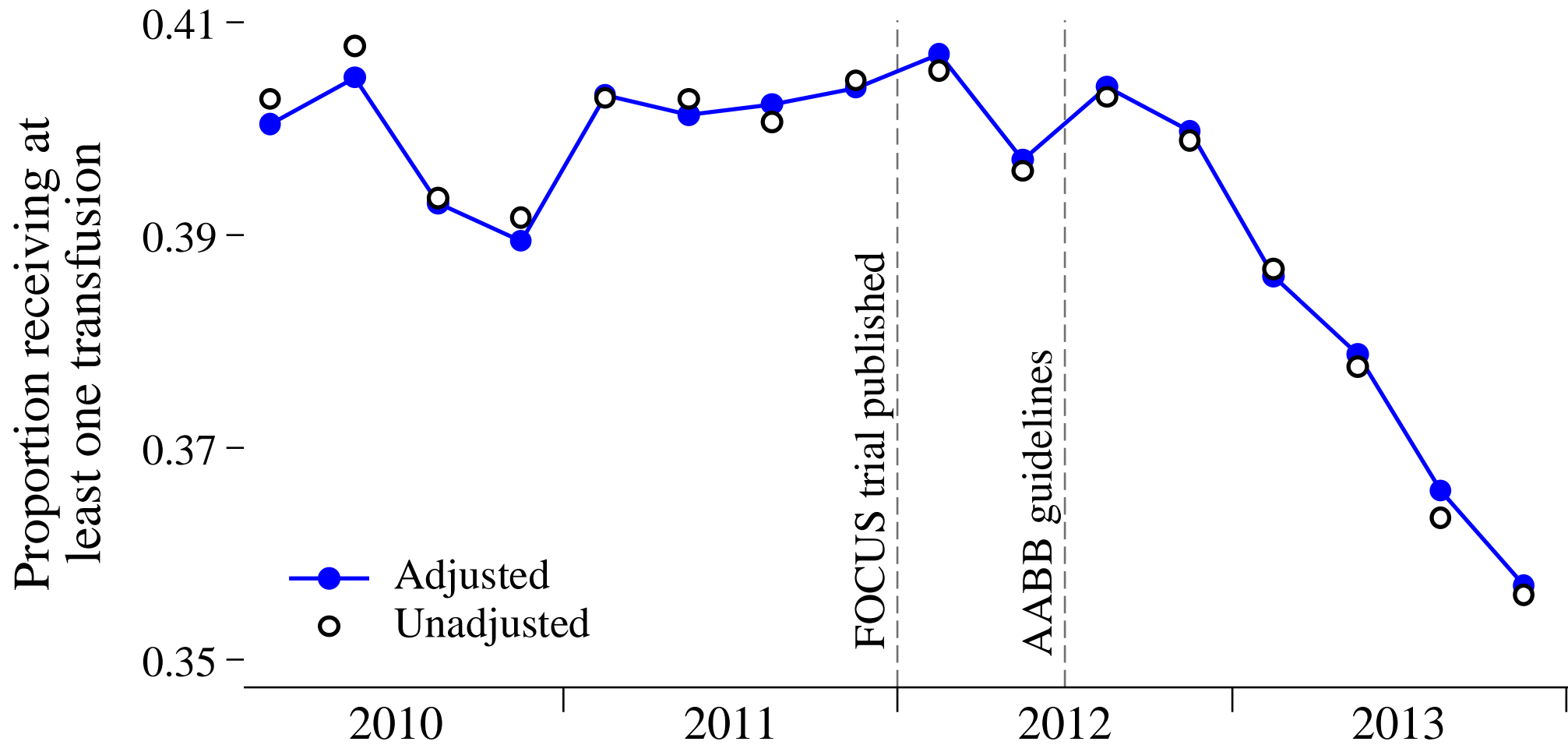
# Abandonment of axillary dissection in breast cancer patients with 1-2 positive nodes



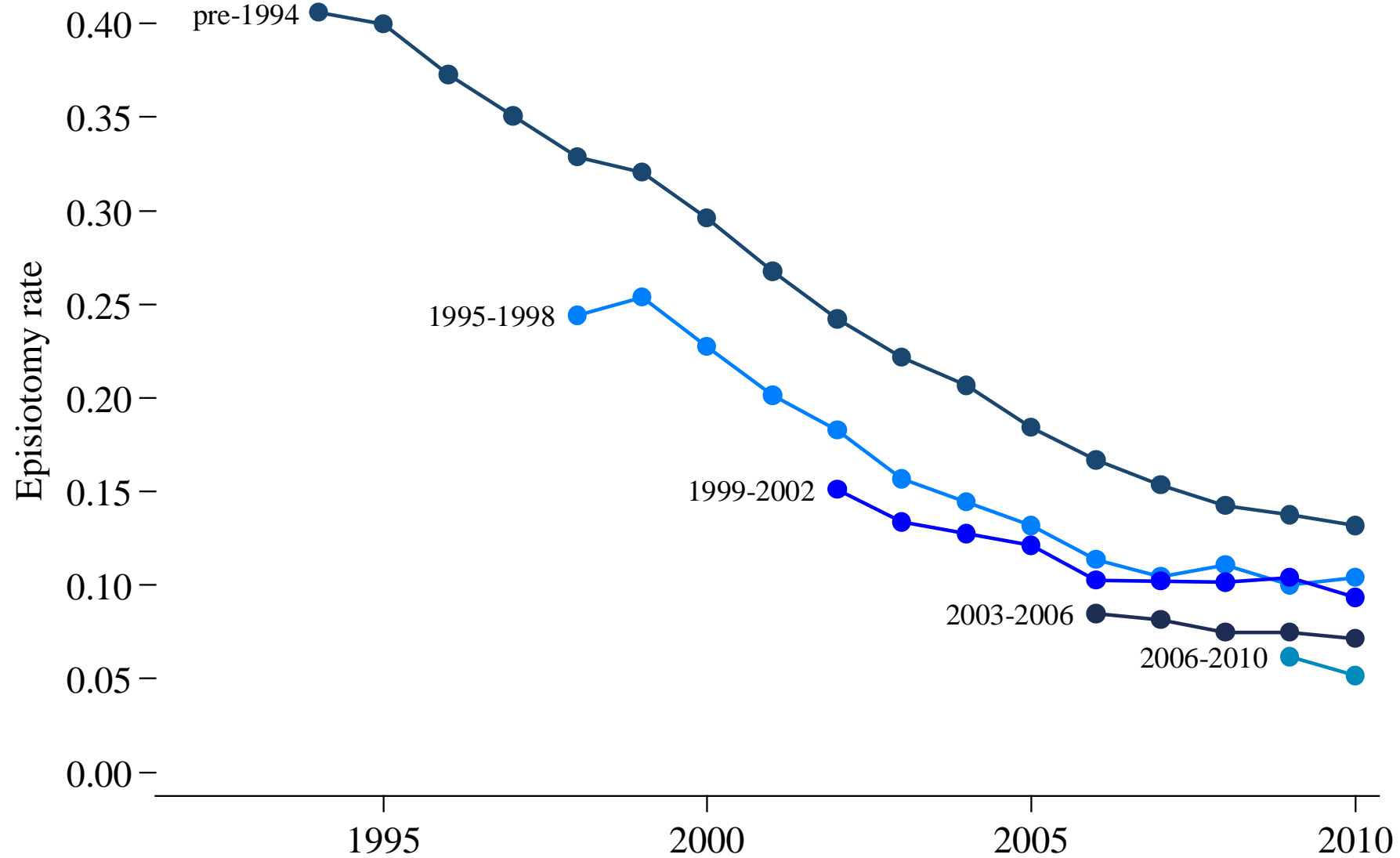
SOURCE: Surveillance, Epidemiology, and End Results (SEER) 18 registries.



# Transfusion rates after surgery for hip fracture



# Episiotomy rates by physician cohort





Notes (not for presentation)

May be tied to Medicare payment

Identify opportunities for cost reduction in a partly capitated world

Identify opportunities to improve patient safety

Funding and research opportunities

Skepticism that these efforts will bear fruit

A need for trials that evaluate untested services

A need for translational efforts.

Existing efforts have been mostly ad hoc, single-center applications

Transforming Clinical Practice Initiative